

GININTUANG MASAGANANG ANI
Go Modern Agriculture

Masaganang Maisan, Maunlad na Bayan!

GMA CORN PROGRAM

Objectives

1. Increased productivity through:

- Expansion of corn hybrid & cassava production areas;
- Decreased post harvest losses through the provision of efficient post harvest facilities;
- Farmers' adoption of hybrid technologies by facilitating farmers' access to quality seeds, credit and participatory training.

Objectives

2. Increased competitiveness of domestic production through:

- Farm mechanization & irrigation;
- Farmers' adoption of good agricultural practices & cost-reducing production technologies.

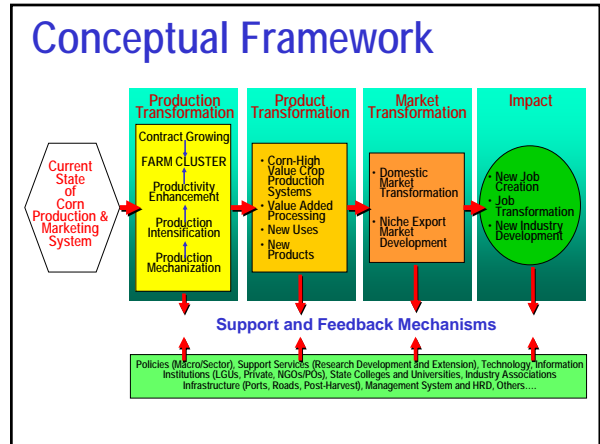
Objectives

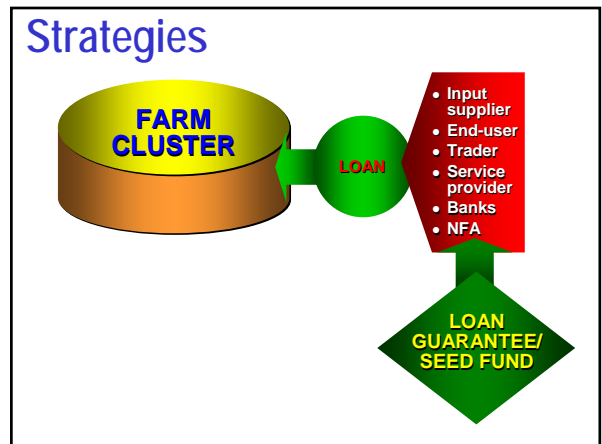
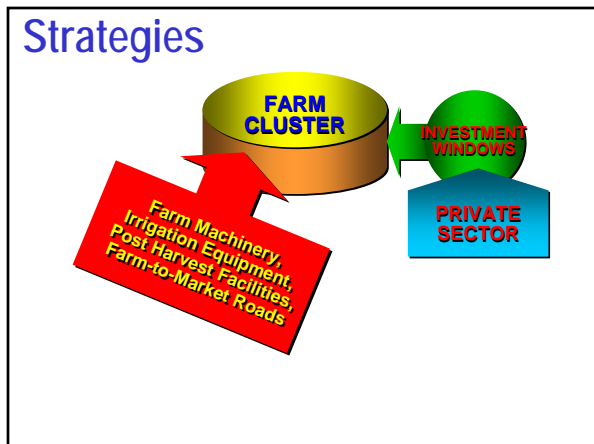
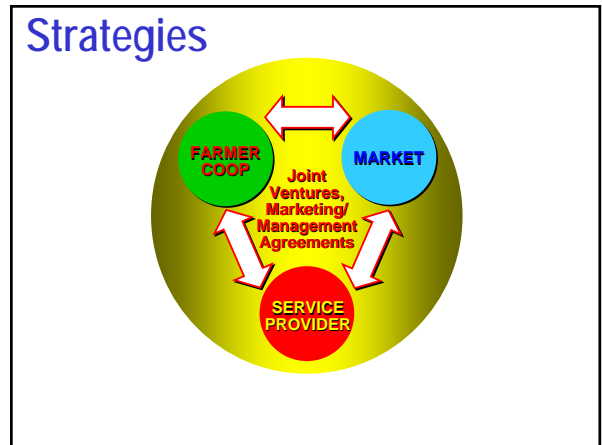
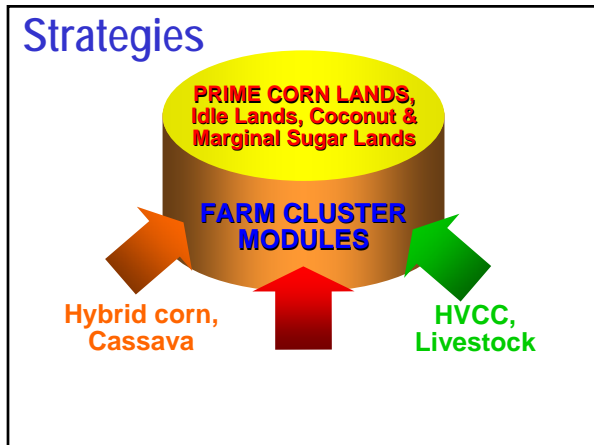
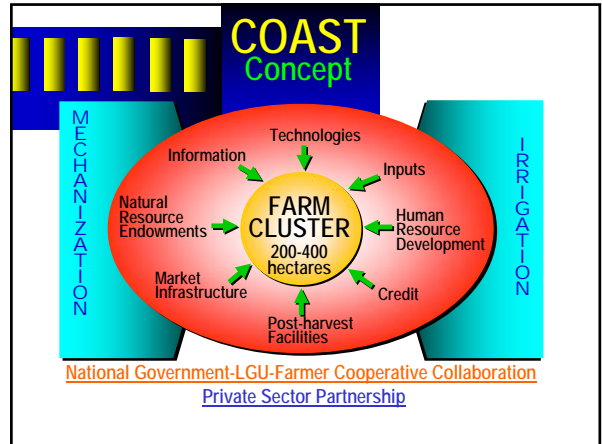
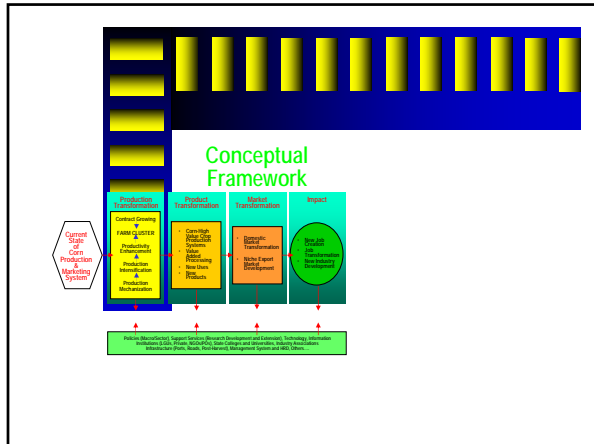
3. Increased farm incomes by ensuring better farm gate prices through:

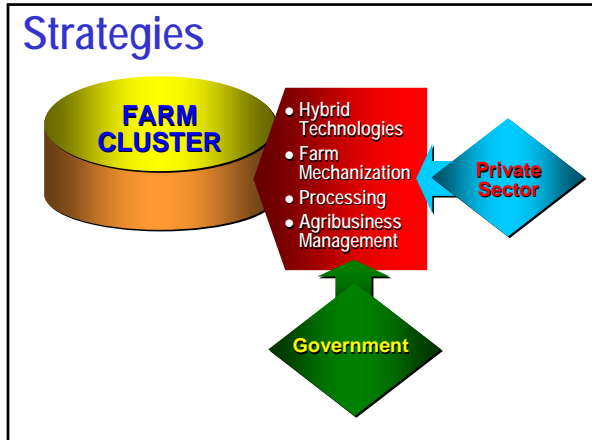
- Marketing arrangements & joint venture agreements between farm clusters & the private sector;
- Pilot of quality farms with value-added corn production schemes;
- Implementation of a standards & classification system;
- Implementation of an electronic market & price information system.

GMA-Corn

Ginintuang Masaganang Ani-Corn Program







Components

Production Support Services

- 1 Hybrid Seed Subsidy Program
- 2 OPV Seed Exchange Subsidy
- 3 Biological Control Program
- 4 Soil Amelioration & Bio-N Program
- 5 Pilot Farm Mechanization & Tractor Pool Program

Components

Irrigation Development Services

- 1 Small Farmer Irrigated Corn Production Program
- 2 Pilot Farm Cluster Overhead Irrigated Corn Production Program

Components

Post Harvest Development Services

- 1 Post Harvest Facilities Program
- 2 Aflatoxin Prevention Program

Components

Marketing Development Services

- 1 Corn-based Agribusiness Systems Technology (COAST) Program
- 2 Market Development & Support
- 3 Corn Marketing & Price Information Network

Components

Extension Support, Education & Training Services

- 1 Farmer Education Program
- 2 Incentive Schemes for LGU-based Extension Personnel

Components

Research & Development Services



- 1 Institutional Corn Research & Development
- 2 Farmers' Participatory Technology Development Program



Components

Credit Facilitation Services



- 1 Hybrid Corn Production Credit Support
- 2 Hybrid Corn Seeds Guarantee Program
- 3 COAST & Post Harvest Facilities Guarantee Program



Components

Policy Formulation & Advocacy Services



- 1 Policy Support & Statistics
- 2 Program Benefit & Impact Evaluation
- 3 Advocacy & Information Activities



Components

Program Management



- 1 Administrative Support to Regional Field Units
- 2 Central & Field Monitoring & Coordination Activities



Components

Program Management



- 3 Technical Monitoring of Post Harvest Facilities
- 4 Support to Travelling Expenses of LGU-based Agricultural Extension



CY 2006 GMA Corn Program Targets

REGION	CORN	CASSAVA	SOYBEAN
Cordilleras	7,400	350	0
Ilocos	23,800	830	0
Cagayan Valley	51,950	300	200
Central Luzon	17,500	725	0
CALABARZON	8,300	840	0
MIMAROPA	15,800	1,010	0
Bicol	17,050	800	0
Western Visayas	4,700	3,175	0
Central Visayas	6,010	450	0
Eastern Visayas	14,800	940	0
Zamboanga Peninsula	18,650	350	0
Northern Mindanao	43,610	100	0
Davao	22,100	1,050	800
SOCOSKARGEN	58,680	4,700	0
CARAGA	7,850	1,750	800
ARMM	34,800	2,630	0
TOTAL	353,000	20,000	1,800

CY 2006 GMA Corn Program Targets

REGION	EXISTING CORN AREAS			NEW AREAS			TOTAL PRODUCTION
	Clusters	Area	Production	Clusters	Area	Production	
Cordilleras	14	7,000	70,000	1	400	3,600	73,600
Ilocos	58	22,800	228,000	3	1,000	9,000	237,000
Cagayan Valley	100	51,050	510,000	2	900	8,100	518,600
Central Luzon	39	16,000	160,000	4	1,500	13,500	86,750
CALABARZON	14	4,800	48,000	9	3,500	24,000	72,000
MIMAROPA	34	11,300	113,000	12	4,500	34,500	147,500
Bicol	25	12,950	129,500	9	4,100	27,900	157,400
Western Visayas	16	4,200	42,000	2	500	4,500	46,500
Central Visayas	7	3,510	35,100	7	2,500	18,000	53,100
Eastern Visayas	32	10,300	103,000	11	4,500	30,000	133,000
Zamboanga Peninsula	26	11,350	113,500	24	7,300	52,200	165,700
Northern Mindanao	93	35,110	351,100	26	8,500	64,500	415,600
Davao	72	15,800	158,000	16	6,300	46,200	204,200
SOCOSKSARGEN	153	51,180	511,800	21	7,500	55,500	567,300
CARAGA	14	5,350	53,500	8	2,500	18,000	71,500
ARMM	68	25,300	253,000	25	9,500	70,500	323,500
TOTAL	765	288,000	2,880,000	180	65,000	480,000	3,273,250

CY 2006 Corn Program Targets

ITEM	Farm Clusters	Physical Area (Ha)	Effective Area (Ha)	Average Yield (MT/Ha)	Total Production (MT)	JOBS GENERATION
Existing Prime Corn Lands	765	288,000	560,000	5.00	2,800,000	62,650
New Areas	83	30,000	58,500	4.50	263,250	30,270
Coconut Intercrop	97	35,000	70,000	3.00	210,000	35,000
TOTAL PROGRAM	945	353,000	688,500	4.75	3,273,250	127,920

CORN: Projected CY 2006 Crop Estimates ('000 MT)

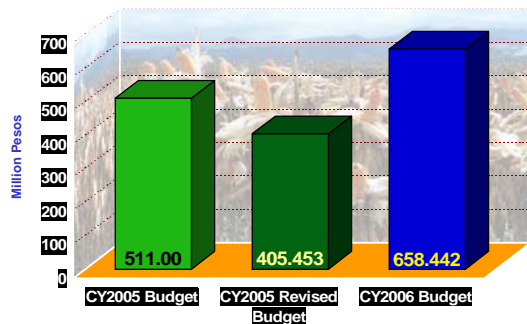
ITEM	CY 2006			CY 2005			CY 2004		
	AREA	YIELD	PROD'N	AREA	YIELD	PROD'N	AREA	YIELD	PROD'N
January - June	938	2.38	2,233	894	2.21	1,973	1,017	2.30	2,335
July - December	1,711	2.36	4,030	1,556	2.12	3,300	1,510	2.04	3,078
TOTAL	2,649	2.36	6,263	2,450	2.15	5,273	2,527	2.14	5,413

Supply & Demand Projections CY 2005-2006

	CY 2006	CY 2005	CY 2004
TOTAL SUPPLY ('000MT)	6,620	6,388	6,214
Beginning Stock	200	192	211
Production	6,263	5,274	5,413
Imports	157	923	589
Corn	0	65	23
Cassava & Feed Substitutes	157	857	566
TOTAL USAGE ('000MT)	6,420	6,188	6,022
Food	988	967	944
Seeds	53	49	51
Feed	4,189	4,117	3,944
Others a/	1,190	1,055	1,083
ENDING STOCK ('000MT)	200	200	192

a/ comprised of wastage and those used for industrial purpose

GMA Corn CY2006 Budget



GMA Corn CY2006 Budget: By Goals

